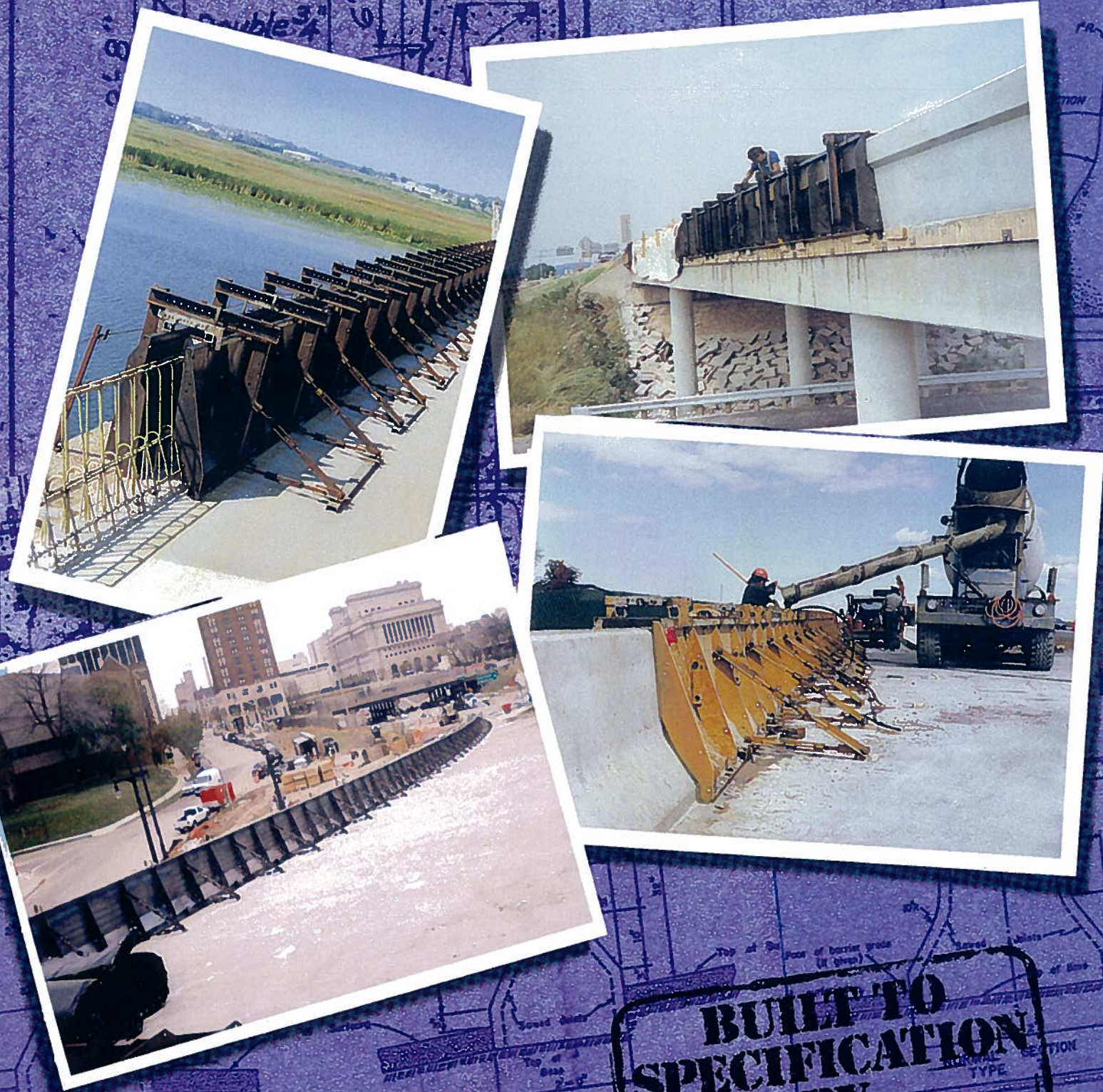
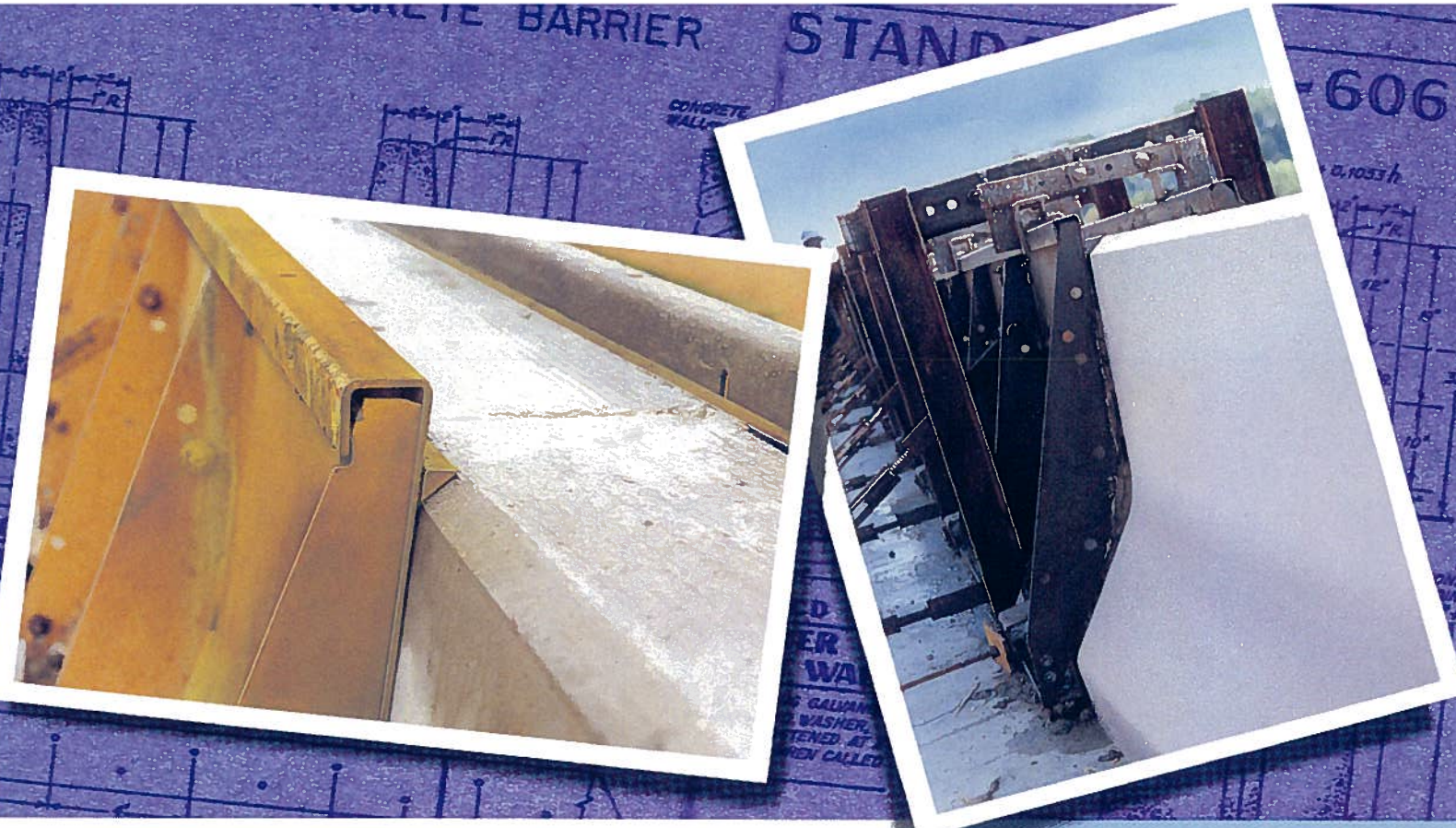


# BARRIER & PARAPET FORMS



## SPECIFICATIONS

[per "New Jersey" style illustrated]

### MATERIAL

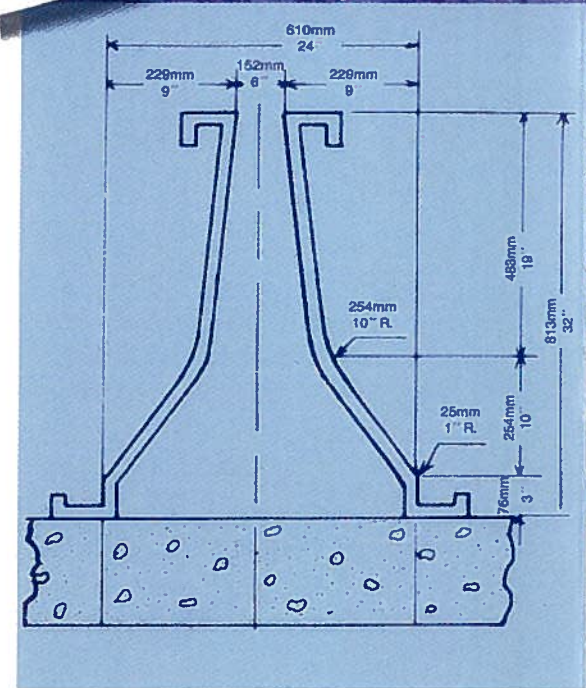
- SIDE FORMS: 3/16-inch steel
- GUSSETS & MOMENT ARMS: 1/4-inch steel
- TOP SPACERS: 1/4-inch bar stock

### WEIGHT

775 LBS. PER 10-FOOT SET-UP

### PUNCHING

- SIDE FORMS:** One horizontal row of four (4) 9/16-inch holes, 2 inches up from bottom, 15 inches and 45 inches in from each end.
- BASE:** Four (4) 9/16-inch holes, 15 inches and 45 inches in from each end, 1 inch in from face.
- TOP TREAD:** Four (4) 9/16-inch holes, 15 inches and 45 inches in from each end, 1 inch in from face.



3334 NORTH BOOTH STREET, MILWAUKEE, WISCONSIN • 53212 • U.S.A.  
 TEL: 414 • 964 • 4550 FAX: 414 • 964 • 4503  
 EMAIL: info@metalforms.com • WEB: www.metalforms.com

**BUILT TO SPECIFICATION BY**



# TYPICAL DOUBLE CONTOUR SET-UP

## TOP SPACERS

(adjustable from 6" to 12")  
assure uniform top thickness

**MOMENT ARMS** (adjustable from 6" to 12") provide positive form alignment. These arms are designed for interchangeable use on either a double contour set-up or on a single contour set-up with a straight back.

**COIL BOLTS & NUTS** quickly attach moment arms to the gussets and provide accurate end alignment

**GUSSETS** are full height to maximize support and rigidity of each form

**MOMENT ARMS** easily adapt from a double contour set-up to a single contour set-up with a straight back

TIE PLATES

**CONTOURED SIDE FORM**  
(V bend style)

**STRAIGHT SIDE FORM**

**CONTOURED SIDE FORM** (radius style)

## PUNCHING ON ALL FORMS

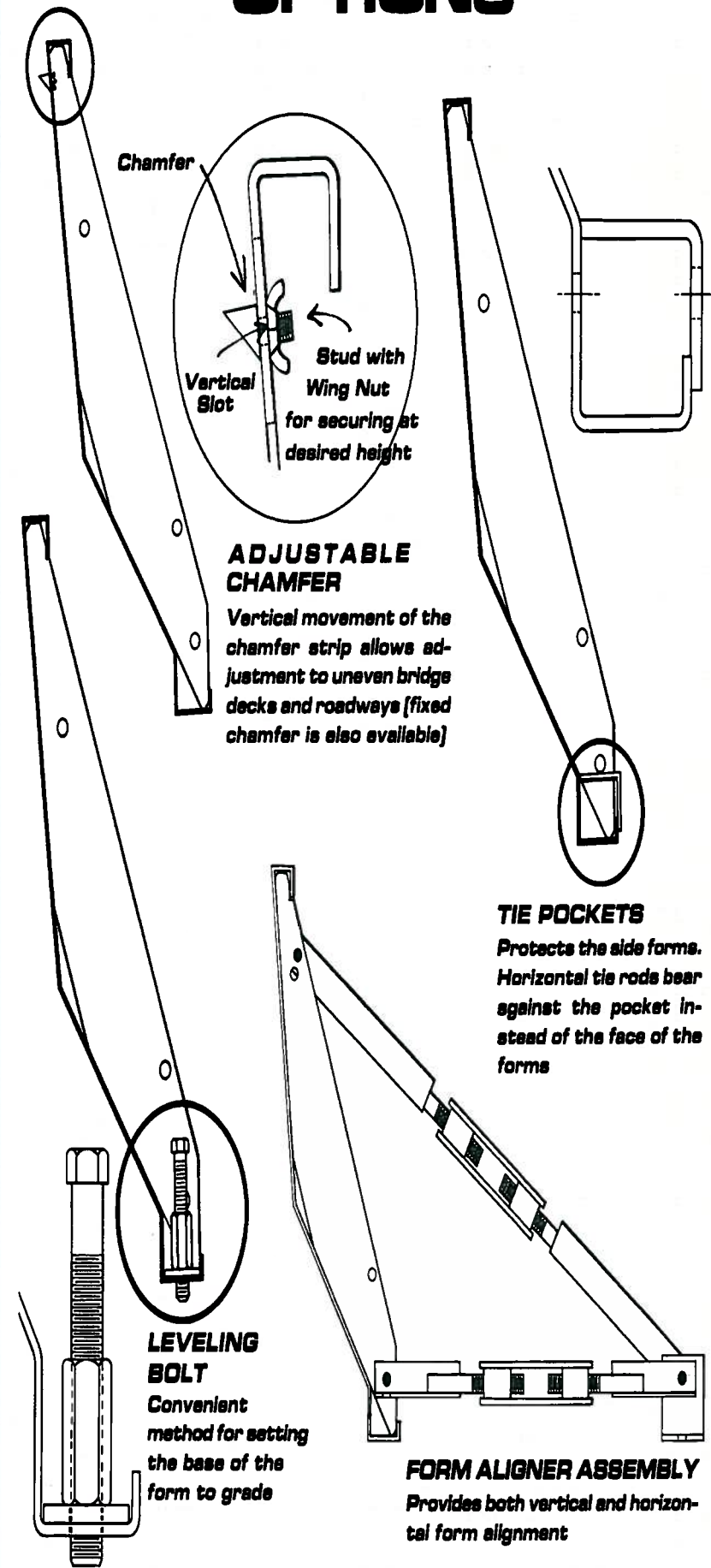
**TOP TREAD** punched with four holes to receive doweled top spacers or for the addition of top riser forms (see options)

**BASE** punched with four holes to facilitate anchoring, for the addition of bottom riser forms or for stacking on top of paving forms

**FACE** punched with four holes to facilitate the use of horizontal tie rods

# TYPICAL SINGLE CONTOUR SET-UP

# OPTIONS



INSERT FORMS  
FRACTIONAL LENGTHS  
BULKHEAD PLATES