



Contact us for further information on any of the Metal Forms products listed in this catalog.



METAL FORMS CORPORATION  
1909 2009



STEEL FORMS



POLY FORMS



HANDLING EQUIPMENT



FINISHING SCREEDS



METAL FORMS CORPORATION  
1909 2009

3334 NORTH BOOTH STREET, MILWAUKEE, WISCONSIN 53212 U.S.A.  
TEL: 414-964-4550 • FAX: 414-964-4503  
EMAIL: info@metalforms.com

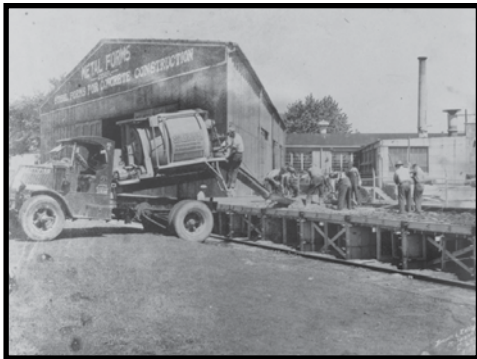
www.metalforms.com

©2009

*Form To Finish™*

www.metalforms.com

**SINCE 1909**



Metal Forms Corporation (MFC), a leading manufacturer in the concrete construction industry since 1909, will celebrate its 100th anniversary in 2009.

The company, which began as a manufacturer of concrete forms, was the first company to successfully design and produce a steel form for constructing concrete homes and buildings. Innovation continued through out the 100 year history as Metal Forms has been awarded over 40 U.S. and foreign patents and currently holds ten registered U.S. and Canadian trademarks.

Through the years, MFC has pioneered quality products backed by reliable service. Today the Company proudly consists of five distinct divisions providing a wide variety of products for the concrete construction industry. The newest member, Sterling Handling Equipment, established in 1904, makes material handling equipment including wheelbarrows and mortar tubs.



Celebrating 100 years of  
**FORM TO FINISH™**



100  
 MFC

**METAL FORMS CORPORATION**  
 1909 2009



**Forms and Screeds for  
 Concrete Construction**

Ph: 414-964-4550

email:info@metalforms.com

**www.metalforms.com**



EQUIPMENT DIVISION

## TRUSS SCREEDS

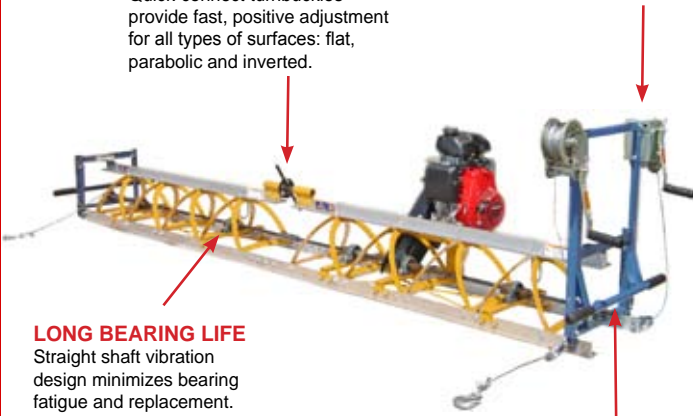
# MIGHTY LITE<sup>®</sup>

### EASY CROWN CONTROL

Quick-connect turnbuckles provide fast, positive adjustment for all types of surfaces: flat, parabolic and inverted.

### ONE SIDE WINCHING

Single person operation



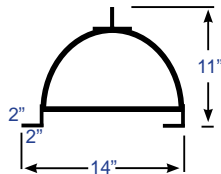
### LONG BEARING LIFE

Straight shaft vibration design minimizes bearing fatigue and replacement.

### LIFT HANDLES

Swing-down handles permit easy maneuvering and transport

<b>Weight:</b>	7.5 lbs. per lineal ft.
<b>Power:</b>	5 h.p.
<b>Max Width:</b>	35 ft.
<b>Sections:</b>	Power section: 5' Extensions: 5' or 10'
<b>Strike-Offs:</b>	Aluminum Angle Blades
<b>Forward Travel:</b>	One-side hand winching



## PRODUCT LINE OVERVIEW

### STEEL FORMS FOR CONCRETE CONSTRUCTION



FORM DIVISION

Flatwork  
Curb & Gutter  
Paving  
Barrier

### CONSTRUCTION STAKES

Nail Stakes  
Form Pins  
Stringline Stakes



STAKE DIVISION

### POLY FORMS FOR CONCRETE CONSTRUCTION

**POLY**  
**PRODUCTS**<sup>™</sup>

PLASTIC DIVISION

Flatwork  
Curb & Gutter

### MATERIAL HANDLING EQUIPMENT

Wheelbarrows  
Mortar Tubs  
Brick & Block Carts



**STERLING**<sup>™</sup>  
HANDLING DIVISION

### CONCRETE FINISHING MACHINES



EQUIPMENT DIVISION

One-Man Screeds  
Truss Screeds

**SLIM LINE**<sup>®</sup>

**LIGHTWEIGHT FORMS**

12 Ga. SPECIAL ANALYSIS STEEL

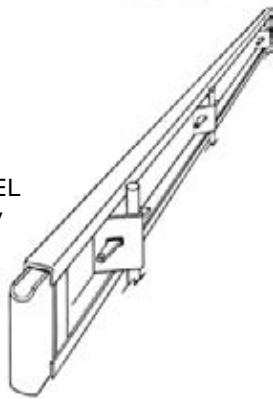
Streamlined design permits easy handling and efficient transport

Base: 2"

Top Tread: 2"

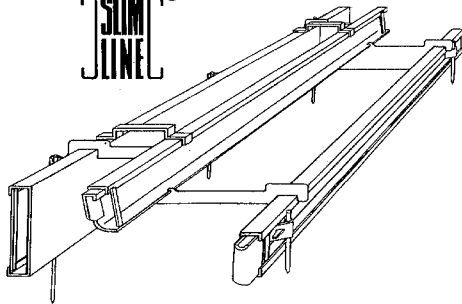
Stake Pockets: V-Type

End Connection: Bullnose

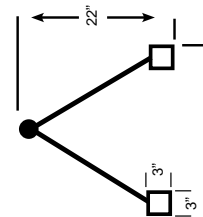


Curb and Gutter manufactured to specifications

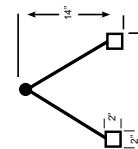
**SLIM LINE**<sup>®</sup>



**HEAVY DUTY**<sup>™</sup>



**CRUISER**<sup>™</sup>



<b>WEIGHT:</b>	20 lbs. per lineal ft.
<b>POWER:</b>	8 h.p. or 13 h.p. gas engine
<b>MAX. WIDTH:</b>	75 ft.
<b>SECTIONS:</b>	Power sections: 5-1/2' or 10-1/2' / Extensions: 2-1/2', 5', or 10'
<b>STRIKE-OFFS:</b>	"Double Life" Aluminum Finishing Tubes
<b>FORWARD TRAVEL:</b>	Hydraulic power winches or hand winches
<b>BEARINGS:</b>	Pillow block, self-aligning, grease type



EQUIPMENT DIVISION

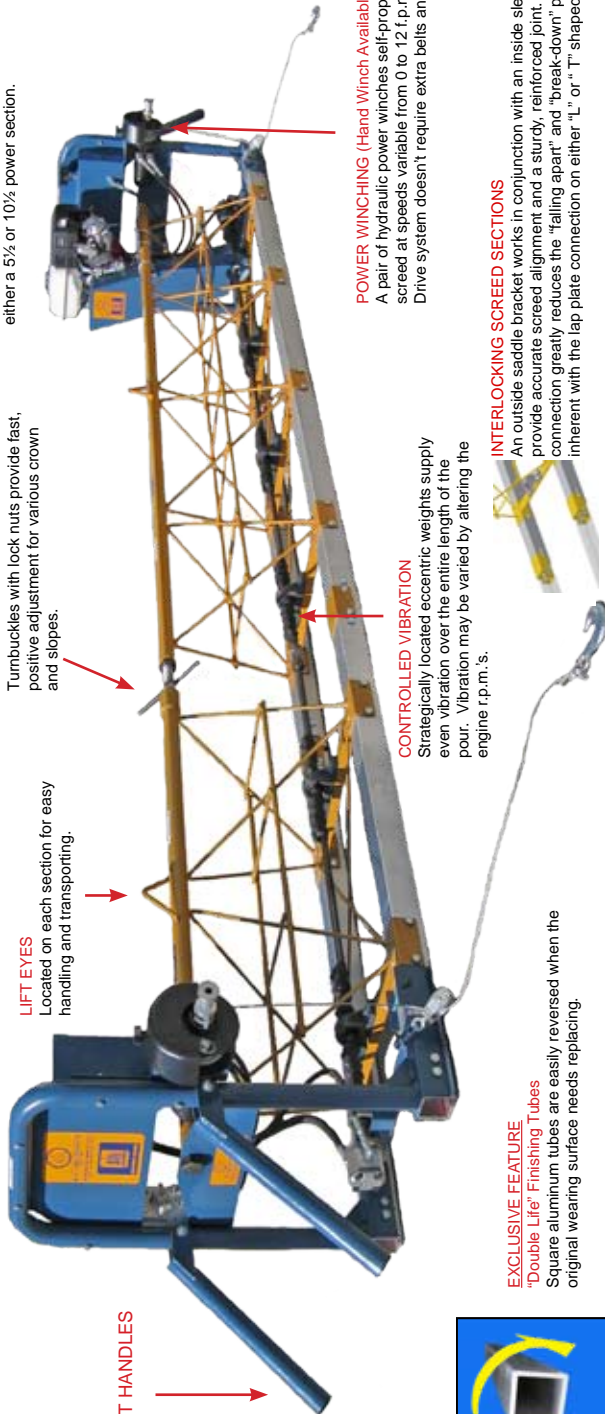
## TRUSS SCREEDS

**SELF-CONTAINED POWER SOURCE**  
Gas powered Honda engine, equipped with centrifugal clutch and dual belt drive, mounts on either a 5' or 10' power section.

**CROWN CONTROL**  
Turnbuckles with lock nuts provide fast, positive adjustment for various crown and slopes.

**LIFT EYES**  
Located on each section for easy handling and transporting.

**LIFT HANDLES**



**POWER WINCHING (Hand Winch Available)**

A pair of hydraulic power winches self-propels the screed at speeds variable from 0 to 12 f.p.m. Direct Drive system doesn't require extra belts and pulleys.

**CONTROLLED VIBRATION**

Strategically located eccentric weights supply even vibration over the entire length of the pour. Vibration may be varied by altering the engine r.p.m. s.

**INTERLOCKING SCREED SECTIONS**

An outside saddle bracket works in conjunction with an inside sleeve to provide accurate screed alignment and a sturdy, reinforced joint. This solid connection greatly reduces the "falling apart" and "break-down" problems inherent with the lap plate connection on either "L" or "T" shaped screeds.

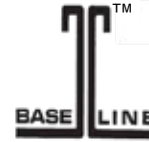
**EXCLUSIVE FEATURE**  
"Double Life" Finishing Tubes

Square aluminum tubes are easily reversed when the original wearing surface needs replacing.



FORM DIVISION

## FLATWORK • CURB & GUTTER



### HEAVY-DUTY FORMS

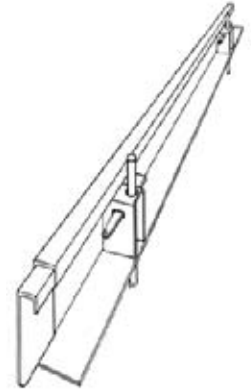
10 Ga. SPECIAL ANALYSIS STEEL  
Heavy-duty design ensures rugged performance and long life

Base: 4"

Top Tread: 2"

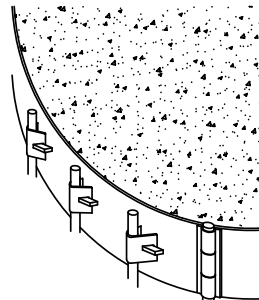
Stake Pockets: Box-Type

End Connection: Full-Height Bent Plate



## FLEXIBLE RADIUS

V-Type Stake Pockets  
Removable End Connections



## PAVING FORMS FOR

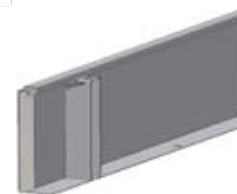
## 3 STYLES



Stake Pockets (3): channel Style  
 End connection (1): Sliding Design  
 Height: Up to 28"  
 Base: Same as Height (or less)  
 Strength: 1/4" or 3/16"



Dual Duty: 2 for 1 form  
 Stake Pockets (3): channel Style  
 End connection (1): Sliding Design  
 Base: Reversible  
 Strength: 1/4" or 3/16"



Stake Pockets (3): box type  
 End connection (1): Fixed Design  
 Height: Up to 24"  
 Base: 4" to 8"  
 Strength: 3/16" or 1/8"

3 STRENGTHS		OPTIONS
1/8"	Supports lightweight screeding and finishing equipment	Reinforcing Gussets Turned-Up Base Flange Double Wedge Stake Pockets Extra Stake Pockets Dowel Bar Punching Dowel Bar Support Assemblies Keyway Attachment Riser Form Attachment
3/16"	Supports deck finishers, roller screeds and lightweight paving equipment	
1/4"	Meets strict paving specifications and supports heavy-duty paving equipment	

**STERLING Mortar Tub**s transport material from mixer to work area. Used on ground level, decks or scaffold. Deep, narrow design reduces mortar set-up; gives more room on scaffold. Standard models feature Heavy Duty 10 ga. steel tubs with lapped corners and continuous welds.

**RMT Special Features...**

- Heavy Duty guide handle welded to tub sides.
- Bar stock re-inforcement front and rear.
- 8" casters swivel and two rigid casters with mold-on rubber tired wheels. Rating 500 lbs. each.
- 6, 10 and 12 Cubic Capacities

**SMT Special Features...**

- Bar stock re-inforcement tub lip on all sides.
- 5" fork clearance.
- Fork lift entry on all sides.
- 6, 10, 12, 16 and 20 Cubic Capacities

## BRICK AND BLOCK CARTS

**BCT-2 AND BCT-3 MODELS**

- Pegboard style fork plate
- Rugged 12" Wheels
- Two 8" brick forks plus two 15" block forks included



**BCT-3** with spring-loaded wheels for easier maneuvering



## WHEELBARROWS

Heavy Duty STERLING Contractor Grade Wheelbarrows outlast, outperform all other brands on the job. Special deep narrow tray design plus Far Forward position on undercarriage means EASIER Lifting and Transport. Carry Heavier Loads with LESS EFFORT.



Connections are welded in place for a stronger and longer lasting leg support—NOT loosely bolted together.



### STERLING-LITE PLUS WHEELBARROWS

Trays offer a lighter weight, no rust alternative to steel trayed units without sacrificing long in service life. Special Extra High

Density Polyethylene compound for high strength, low temperature impact resistance and maximum durability. UV stabilized and black color for maximum protection against ultra violet rays.



Standard Model 6P  
Capacity 6 cu. ft. with  
dual pneumatic tires.

### OPTIONS

RSU™ for faster, easier discharge  
Poly-U® molded polyurethane flat free wheel  
Heavy Duty Steel Handles



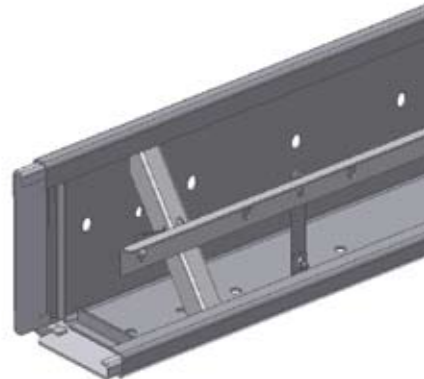
## PAVING

### HIGHWAYS, AIRPORTS AND STREETS

### 3 STYLES



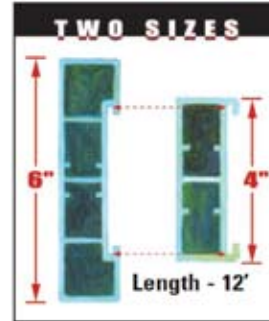
### Dowel Bar Support Assembly



## Built To Specification



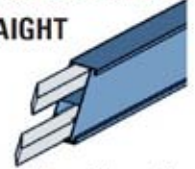
## POLY FORMS



High Density Polyethylene (HDPE)

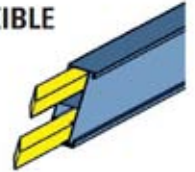
### TWO STYLES

#### STRAIGHT



Aluminum tubes reinforce the entire length of poly forms to provide the rigidity of a 2 x 4.

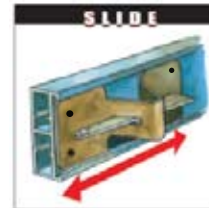
#### FLEXIBLE



Poly forms without reinforcement tubes can be bent to achieve any curve down to a 3' radius.

## METAL ACCESSORIES

1



The "SLIDE" pocket is inserted at the end of either the 4" or 6" poly form.

2



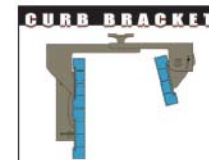
The "TWIST" pocket provides multiple staking options since it can be easily inserted at any location along the length of any form.

3



The slide-type "STACKING" pocket permits poly forms to be stacked to achieve heights of 8", 10" and 12".

4



The versatile twist-in "OVERHEAD HANGER" is adjustable for both curb thickness and curb batter (batter on straight work only).

*An Engineered Plastic Concrete Forming System*

PATENTED



**PolyMeta**  
**Forms**

**FEATHERWEIGHT:**

Easy to set, strip and transport

**MOISTURE RESISTANT:**

Forms will not rot, splinter or rust

**LOW MAINTENANCE:**

Easy to clean/outstanding weatherability

**DURABLE/ LONG LIFE:**

Withstands harsh construction conditions/ reuse over 150 times

**VERSATILE:**

Straight and radius forming systems designed for both flatwork and curb & gutter construction



Sidewalk



Curb & Gutter

10' Length of **Median Barrier Form** Set-up with TWO(2) **Contoured Face**, TWO(2) **Moment Arms** and TWO(2) **Top Spacers**



WEIGHT: 640 lbs. per 10' of SET-UP

10' Length of **Bridge Parapet Form** Set-up with ONE(1) **Contoured Face** AND ONE(1) **Straight Face**, TWO(2) **Top Spacers** and TWO(2) **Form Aligners**



WEIGHT: 625 lbs. per 10' of SET-UP

**OPTIONS:**

Fixed or adjustable chamfer  
Special Punching  
Tie Pockets  
Riser forms  
Insert forms  
Form Aligners  
Moment Arms  
Top Spacers

## STAKES

All stakes are manufactured from high carbon material to assure easy driving and long life. Stakes will not bend/Points will not break

### Nail Stakes (3/4" and 7/8")

#### Round/Flat

The ideal accessory for wood framing. Round nail stakes can also be used as form stakes.

### Form Stakes (3/4", 7/8" and 1")

The ideal accessory for steel and poly forms.

Standard Lengths: 12", 18", 24", 30", 36", 48"



### Nail Stake Puller

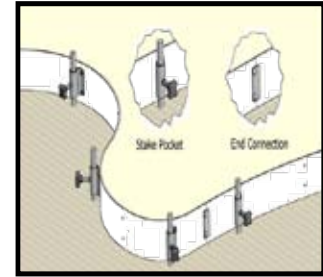
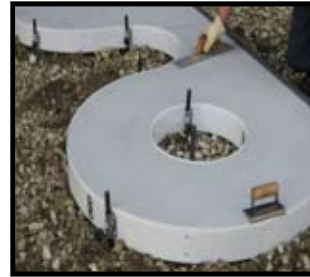
Removes both flat and round nail stakes



### Stringline Stakes & Accessories



## RADIUS FORMS



**LONG LIFE:** No need to constantly replace materials that disintegrate with exposure to harsh jobsite conditions.

**QUICK GRADE ELEVATION ADJUSTMENT:** "No Tool" adjustment to set forms to grade.

**POSITIVE END CONNECTION:** Eliminates labor-intensive slicing procedures.

**EASY TO SET AND STRIP:** Bolt-on steel stake pockets with easy grip locking knob.

Standard 10' lengths of the 4", 6" and the new 12" are manufactured from High Density Polyethylene(HDPE) to form tight radii from 36" to as small as 9".

### Industry Awards



Readers' Choice  
AWARDS  
Concrete & Masonry Construction Products