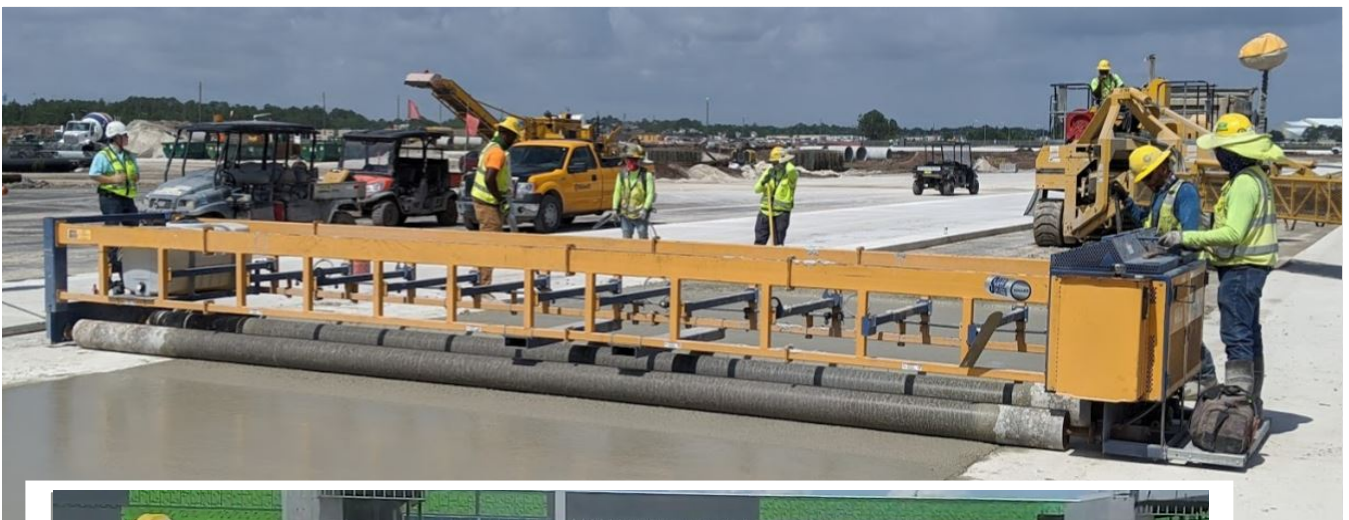
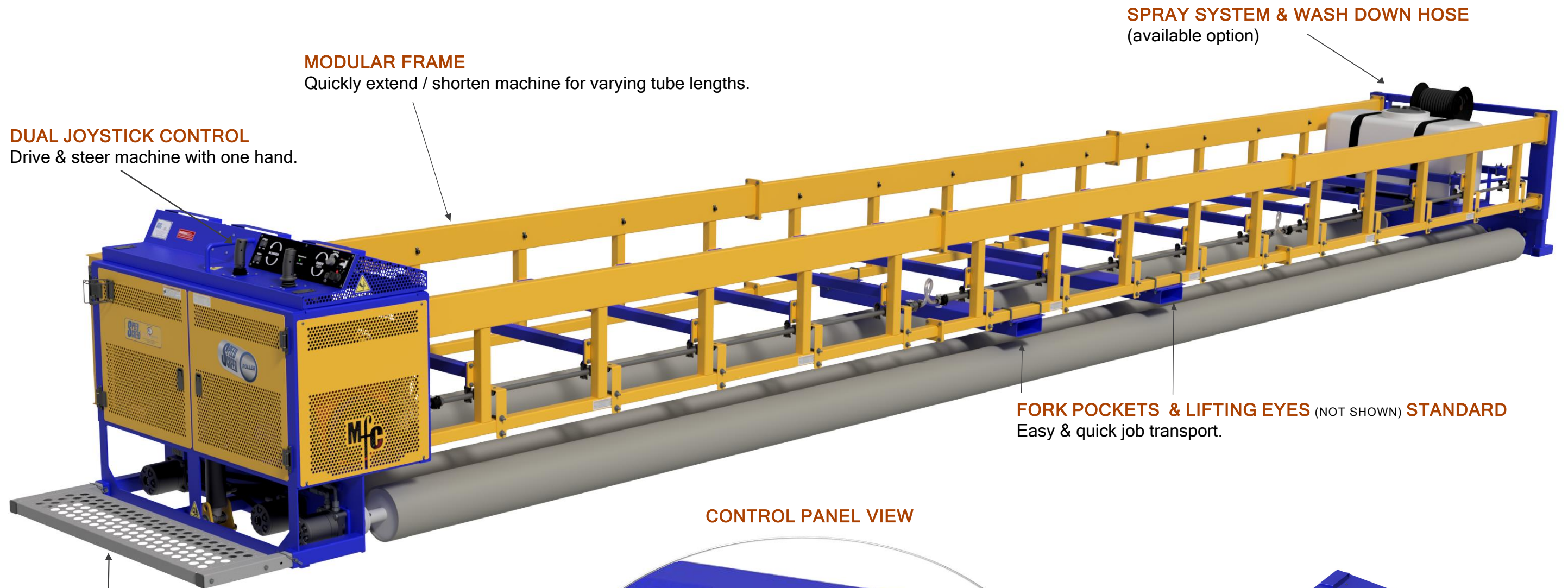




METAL FORMS CORPORATION  
SINCE 1909



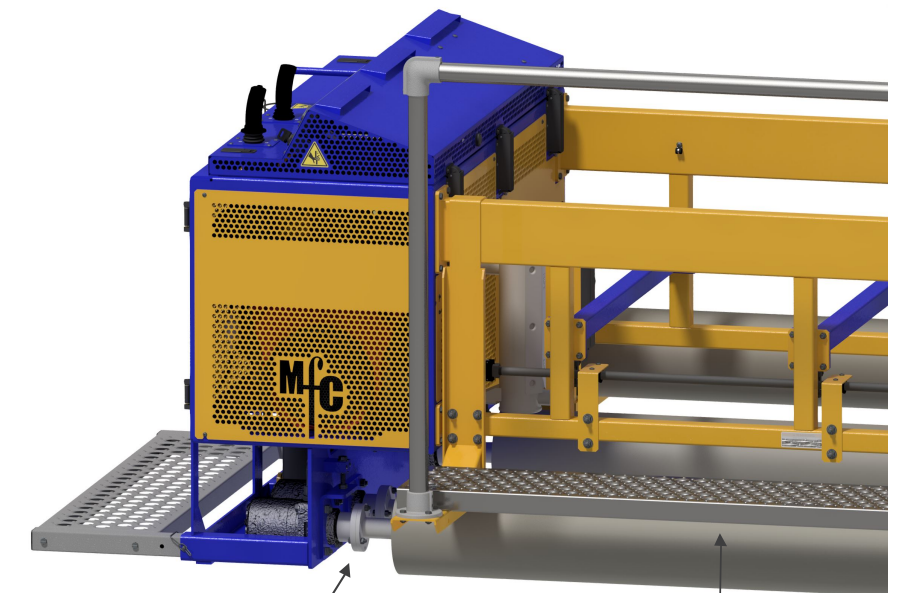




**FORK POCKETS & LIFTING EYES** (NOT SHOWN) **STANDARD**  
Easy & quick job transport.

**REMOVABLE OPERATOR PLATFORM**  
Easily remove operator platform for clearance.

#### CONTROL PANEL VIEW



**QUICK-CHANGE TUBE COUPLERS**  
Remove just six bolts /roll tubes in and out of machine.

**WALKWAY / WORK PLATFORM**  
(available option)

#### MACHINE SPECIFICATIONS

- Kohler 38hp engine
- Working load compensation
- 1" front "Slinger" tube adjustment
- Weight (15ft.): 3,350 lbs
- Weight per add'; ft: 120lbs
- Max. width: 32 ft  
(5,6,7,8,9 & 10 ft extensions)
- Fuel Tank: 12 gal
- Roller tube size: 8.5" DOM ( .25 wall thickness)
- 16" leg stroke