

## 7.0 Assembly: Radius Work

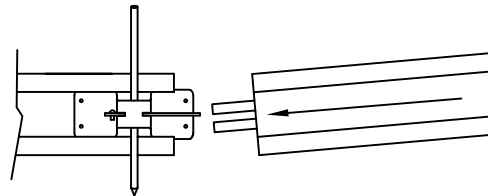
Section 7 contains the following sub-sections:

- 7.1 Introduction: "Stake as you go"
- 7.2 Flatwork
- 7.3 Curb Only
- 7.4 Curb & Gutter
- 7.5 Curb & Gutter Poly with Steel Battered Face Form (sawcut)

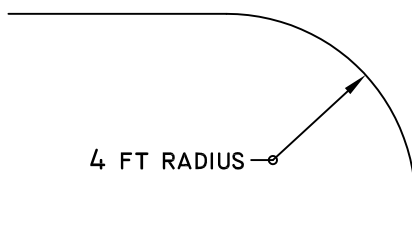
### 7.1 Introduction: "Stake as you go"

Plan Ahead:

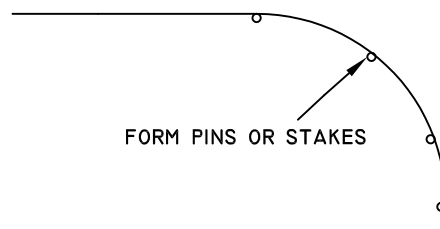
- "Stake as you go": Bend the form around the radius, staking as you go.
- Joints between forms should not be at the apex of a radius.
- Join forms together using end connection as a guide.
- Use form pins as guides, to bend form around radius.



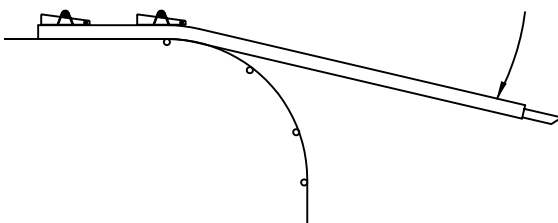
**Step 1:** Trace radius onto ground or set stringline. (Example shown below: forming a 4' outside radius, overhead view.)



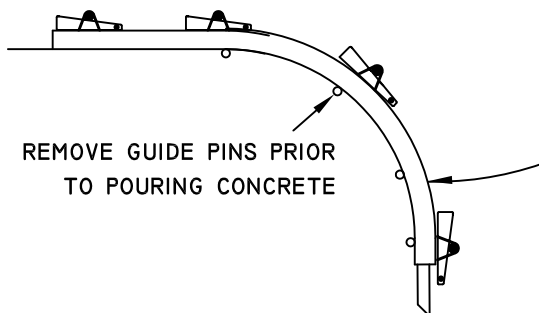
**Step 2:** Set stakes as "guide pins" along arc.



**Step 3:** Set form in place, starting at one end; stake into place (about every 3 ft.); lock the wedges.



**Step 4:** Join forms together using end connection as a guide.

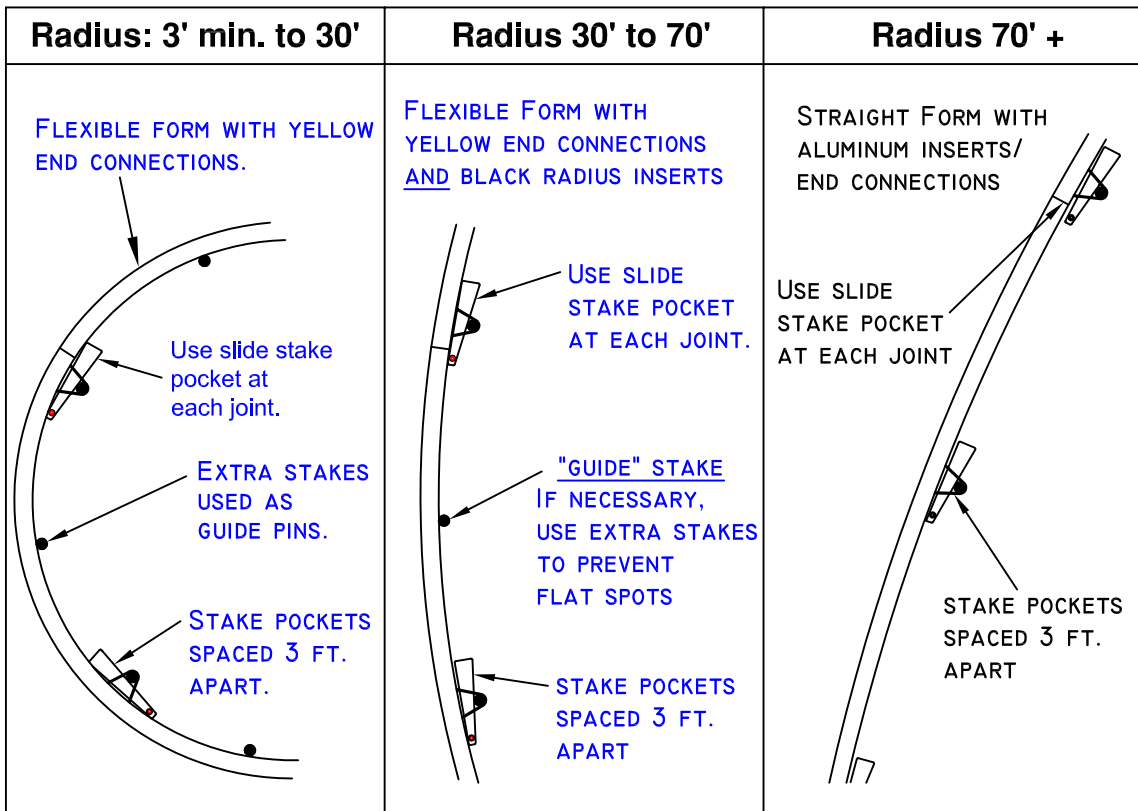


## 7.2 Assembly: Radius Work - Flatwork

RECOMMENDED FORMS		
Height of Form	Radius	Type of Form
4"	3' min. to 30'	Flexible forms with <u>yellow</u> end connections.
	30' to 70'	Flexible forms with <u>yellow</u> end connections and black radius inserts.
6"	70' +	Straight form with <u>silver</u> aluminum end connection/inserts.

RECOMMENDED STAKES	
Height of Form	Stake or Pin (3/4" or 7/8" dia.)
4"	18"
6"	24"

Overhead views shown below: Flatwork forms (4" & 6")



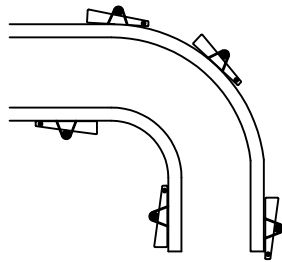
# Assembly: Radius Work - Curb Only 7.3

RECOMMENDED FORMS		
Height of Form	Radius	Type of Form
8" high, 4"+4" stacking pocket	3' min. to 30'	Flexible forms with <u>yellow</u> end connections. Flexible forms with <u>yellow</u> end connections and black radius inserts.
10" high, 4"+6" stacking pocket		
12" high, 6"+6" stacking pocket	30' to 70'	Straight form with <u>silver</u> aluminum end connection/ inserts.
18" high, 6"+6"+6" stacking pocket plus twist or slide pocket		
	70' +	

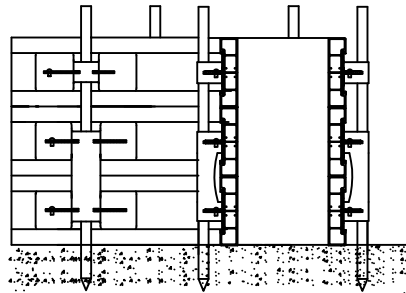
RECOMMENDED STAKES	
Height of Form	Stake or Pin (3/4" or 7/8" dia.)
8"	24"
10"	30"
12"	36"
18"	36"

RECOMMENDED ACCESSORIES	
Overhead Hangers	Every 30"

Vertical face radius curb (top view)



Vertical face radius curb (side view)

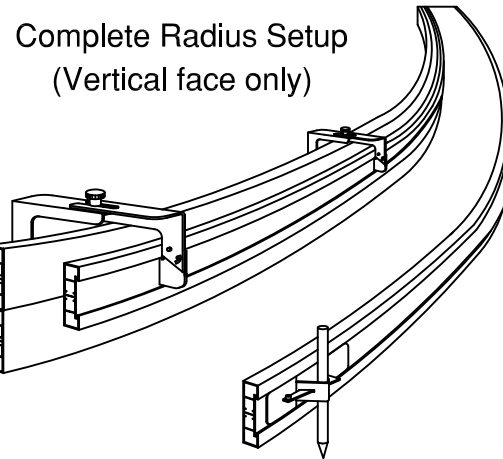


Overhead views shown below: Curb only (up to 18")

Radius: 6' min. to 30'	Radius 30' to 70'	Radius 70' +
<p style="color: blue;">FLEXIBLE FORM WITH YELLOW END CONNECTIONS.</p> <p style="color: blue;">Use slide stake pocket at each joint.</p> <p style="color: blue;">EXTRA STAKES USED AS GUIDE PINS.</p> <p style="color: blue;">STAKE POCKETS SPACED 30 IN. APART.</p>	<p style="color: blue;">FLEXIBLE FORM WITH YELLOW END CONNECTIONS AND BLACK RADIUS INSERTS</p> <p style="color: blue;">USE SLIDE STAKE POCKET AT EACH JOINT.</p> <p style="color: blue;">"GUIDE" STAKE IF NECESSARY, USE EXTRA STAKES TO PREVENT FLAT SPOTS</p> <p style="color: blue;">STAKE POCKETS SPACED 30 IN. APART</p>	<p style="color: blue;">STRAIGHT FORM WITH ALUMINUM INSERTS/ END CONNECTIONS</p> <p style="color: blue;">USE SLIDE STAKE POCKET AT EACH JOINT</p> <p style="color: blue;">STAKE POCKETS SPACED 30 IN. APART</p>

RECOMMENDED FORMS		
Height of Form	Radius	Type of Form
8" high, 4"+4" stacking pocket	6' min. to 30'	Flexible forms with <u>yellow</u> end connections.
10" high, 4"+6" stacking pocket		
12" high, 6"+6" stacking pocket	30' to 70'	Flexible forms with <u>yellow</u> end connections and black radius inserts.
18" high, 6"+6"+6" stacking pocket plus twist or slide pocket		
	70' +	Straight form with <u>silver</u> aluminum end connection/ inserts.

RECOMMENDED STAKES	
Height of Form	Stake or Pin (3/4" or 7/8" dia.)
8"	24"
10"	30"
12"	36"
18"	36"



RECOMMENDED ACCESSORIES	
Overhead Hangers	Every 30"

Overhead views shown below: Curb & Gutter

