



# Poly Meta Forms®

## Engineered Concrete Forming System

Poly Meta Forms® are a light weight and green alternative to traditional wood forming. Weighing 50% less than wood and having uniform heights makes poly forms the simple choice when forming sidewalks, slabs or driveways. Poly Meta Forms® system allows for horizontal and vertical adjustments by simply loosening the wedge on the steel pockets.

- MATERIAL** | High Density Polyethylene
- Moisture resistant
  - Light weight
  - Reusable
  - Easy to clean
  - Will not warp or twist

### TWO STYLES



Straight  
Rigidity of lumber

Radius  
Flexible to 3' radius

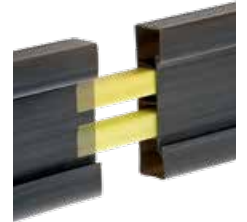
### SIZES

4" & 6" heights  
All 12' lengths Uniform  
sizes/lengths compared  
to lumber



### END CONNECTION

Tight secured form joint Fast,  
accurate alignment Eliminates  
toe-nailing



### STAKE POCKETS

All steel stake pockets come with a locking wedge  
Anchors form to grade - Securely locks to 3/4" or 7/8" dia. stakes - Quick vertical adjustment

#### Slide Pocket (15/bucket)

Reinforces form joint  
Convenient connection to  
wood with pre-drilled  
holes





#### Twist Pocket (30/bucket)

Insert pocket at any  
location along the form



# PART NUMBERS

## FORMS

HEIGHT	Style (Part No.)
 4"	Flexible (869-420)
	Straight (869-450)
 6"	Flexible (869-620)
	Straight (869-650)

## STAKE POCKETS

### SINGLE HEIGHT POCKETS

Style	Part No.
Slide Pocket	869-025
Twist Pocket	869-040



### STACKING STAKE POCKETS

STACKABLE HEIGHT	Part No.
4" + 4" = 8"	869-300
4" + 6" = 10"	869-310
6" + 6" = 12"	869-320

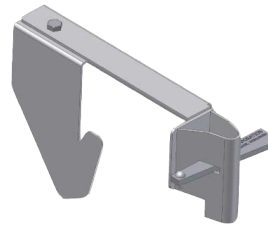
Stacking Pockets (5/  
bucket) Stackable to  
12", 10" and 8" heights



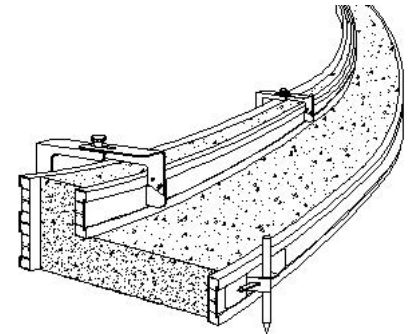
## HARDWARE & ACCESSORIES

ACCESSORIES	Part No.
Overhead Hanger Unit	869-355
Radius Form Insert	869-160

Overhead Hanger Unit (5/bucket) For Curb / curb & gutter



OH Hanger Unit for Curb & Gutter  
set-up. Secures back form with face



## PACKAGING & SHIPPING



15 Slide pockets  
30 Twist Pockets  
5 Stacking Pockets  
5 Overhead Hanger Units



10 Forms Per Box 12' lengths  
(12'x10 = 120l'/box)

Poly Meta Form orders ship via ltl. Larger order will ship  
on a pallet, while smaller will be banded together.

A "Form to Finish" Product From:

